

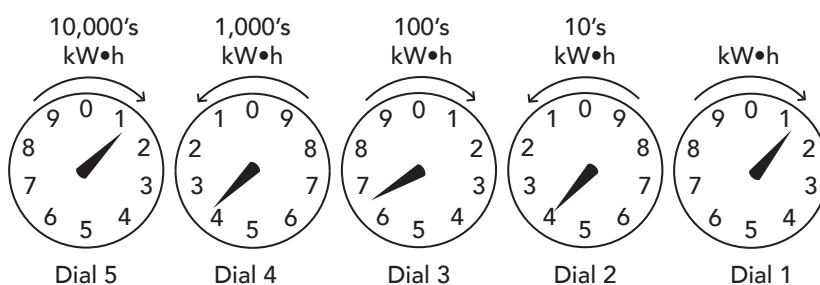
HOW TO READ YOUR ELECTRIC METER

This is a typical electric meter found in most homes.

By reading the dials on the face of your meter, you can determine the amount of electrical energy (kWh) you use.



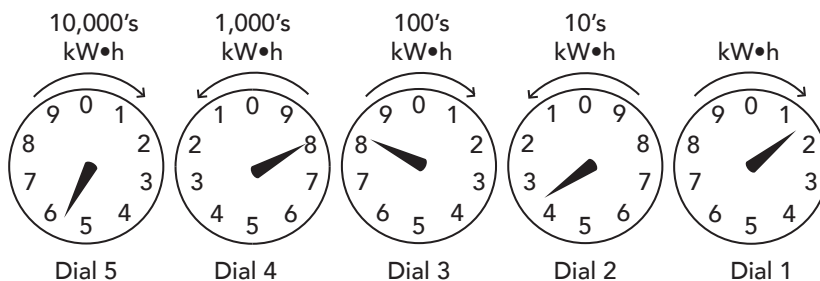
Example 1:



Read numbers from RIGHT to LEFT

Above and below are close-ups of the dials on your electric meter. Most residential meters have five dials, but some may have only four. However, the procedure to read and record is the same for both models. Each dial rotates in an opposite direction from the one beside it. Dial 1 rotates clockwise; dial 2 rotates counterclockwise; dial 3 clockwise, etc. Each dial turns 10 full revolutions before the next dial turns. Dials are read from right to left, and the figures should be written (recorded) in the same order – from right to left. When the pointer on the dial is between two digits, the smaller number is read. The meter reading in example 1 is 13641. Not all readings are as obvious.

Example 2:



Read numbers from RIGHT to LEFT

Dial 1 reads 1. Dial 2 reads 3. Dial 3 reads 8. Dial 4 reads 7. The pointer appears to be in 8, but the actual reading is 7 as dial 3 has not completed a full revolution. Dial 5 reads 5. The actual reading is 57831.